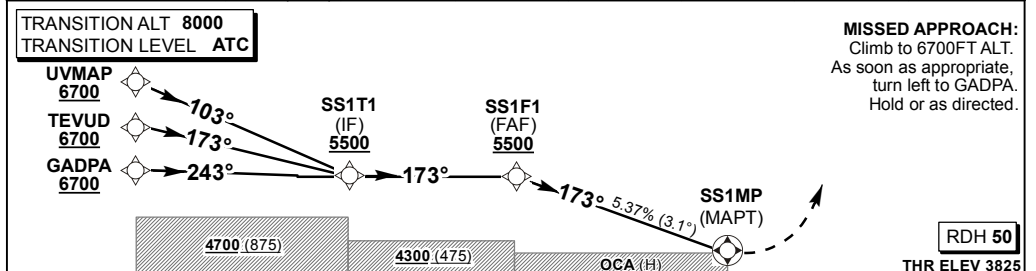


DIST (NM) to THR	4.98	4	3	2	1		
ADVISORY ALT(HGT)	5500 (1675)	5190 (1365)	4860 (1035)	4530 (705)	4210 (385)		



Straight-in Approach	VNAV	RVR	ALS OUT	Circling	Rate of descent							
					GS	KT	80	100	120	140	160	180
					SS1F1 to SS1MP	M:S	3:44	2:59	2:29	2:08	1:52	1:39
						FPM	435	544	653	762	870	979

NOTE:
 1. MAPT at THR.
 2. Local QNH required for LNAV/VNAV.
 3. Automated WX Station 121.0 MHZ.
 4. Circling to the East of runway only.

CHANGE: NEW Procedure